

# KÄRCHER

makes a difference

**B 40 + D51**

**B 60 + D65**

**B 80 + D75**

**=**

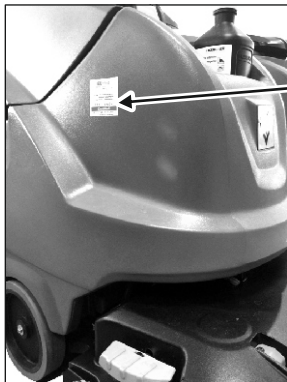
**EU**nitied  
Cleaning + European  
Cleaning Machines  
Association

- High Cleaning Efficiency
- Low Energy Consumption
- Low Water Consumption

**EFFICIENCY**

**FOR A CLEAN ENVIRONMENT**

ACC. IEC/EN 62828 and TS EUCle 35000



**EU**nitied  
Cleaning + European  
Cleaning Machines  
Association

- High Cleaning Efficiency
- Low Energy Consumption
- Low Water Consumption

**EFFICIENCY**

**FOR A CLEAN ENVIRONMENT**

ACC. IEC/EN 62828 and TS EUCle 35000

